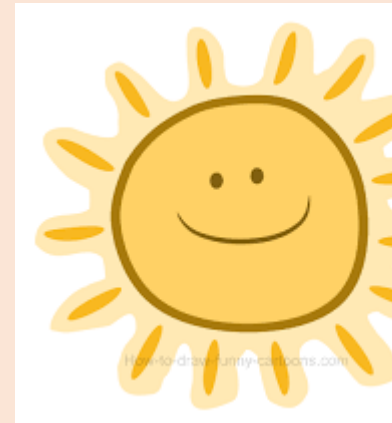


A very warm welcome to you all!



the term ahead

Week	Monday	Tuesday	Wednesday	Thursday	Friday
2/9 How to be a Lion					
1 9/9	Science- Animals including Humans (Naming body parts and our five senses)				
2 16/9	Science- Animals including Humans (Animal babies and lifecycles)				
3 23/9	Geography- Why do we live here?				
4 30/9	Geography- Why do we live here?				
5 7/10	Reading is Magic				
6 14/10	Art- Picasso Faces (Painting)				
7 21/10	RE- Why is light an important symbol?				
Half Term					
1 4/11	Science- Animals including Humans (Importance of exercise, food and hygiene)				
2 11/11	Science- Animals including Humans (Importance of exercise, food and hygiene)				
3 18/11	History- Notorious Nurses (Why are some nurses famous?)				
4 25/11	History- Notorious Nurses (Why are some nurses famous?)				
5 2/12	DT- Sliders and Levers (Pop up Christmas card)				
6 9/12	RE- What does the nativity story teach Christians about Jesus?				
7 16/12	Christmas Production				

**Our Science project this half term is...
Our Bodies/Lifecycles**

We will be learning to identify, name, draw and label the basic parts of the human body. We will be investigating our five senses and thinking about which body parts those senses link to. We will be exploring animal and human lifecycles and learning about animal offspring. We will be thinking about the basic needs of humans and animals and exploring how to look after pets.



English

We will be focussing most of our learning this half term on the story 'Stuck' by Oliver Jeffers. The children will be thinking about sentence structure with year one writing simple sentences, using a capital letter, finger spaces and full stops. Year 2 will be using conjunctions and adjectives to make their writing more exciting.

**Year 1/2
First Half
Autumn Term 2024**



**Our Humanities project this half term is...
Why do we live here?**

We will be considering why we live here on planet Earth and what conditions make it possible for us to live here. We will be establishing the fact that we live in a country called England, in the county of Norfolk, in the village of Brundall. We will be exploring what attracts people to live in Brundall and investigating the physical and human features of the village through field trips.



Maths

In Maths, we will be focussing to begin with on Place Value. In Year 1, this is sorting objects, counting objects, recognising numbers as words, finding 1 more/1 less than a number and comparing numbers. Year 2 will be counting objects to 100, recognising tens and ones and partitioning numbers to 100. We will be counting in 2's, 5's, 10's and starting to count in 3's.

ART

This half term we will be exploring the work of Pablo Picasso, in particular his work around portraits. We will be developing our own self-portraits in the style of Picasso using watercolours.



We have two PE lessons each week as well as Computing and we study an RE unit each half term. In Music, we will be composing 4-beat patterns, chanting in unison and in rounds and creating clapping rhythms.

Murphy Class- PE (Monday, Wednesday)
Halls Class- PE (Wednesday, Friday)
Vere Class- PE (Monday, Wednesday)



What a week in Year 1/2 looks like

	8.40	9.00	10.00	10.45	11.00	11.15	12.15	1.10	2.15	3.25
Mon	8.40-8.55 Flexible Start (1:1 reading/Fine motor)/Register/	English	Phonics and Reading	Phase Assembly	Playtime	Mathematics	Lunch and Playtime	Handwriting	PE	Computing
Tues		English	Phonics and Reading	Class Assembly	Playtime	Mathematics			Subject Blocking	Subject Blocking
Wed		Phonics and Reading	SINGING ASSEMBLY 9:45-10:00 PPA Music PSHE PE		Playtime	PPA Music PSHE PE			English	Mathematics
Thurs		English	Phonics and Reading	Cross school circle time	Playtime	Mathematics			Subject Blocking	Subject Blocking
Fri		English	Phonics and Reading	Whole school assembly (10:30)	Playtime	Mathematics			Subject Blocking	Subject Blocking
								Afternoon Playtime (10 mins)		

PE

Murphy Class- Monday, Wednesday

Vere Class- Monday, Wednesday

Halls Class- Wednesday, Friday

PE Kit to be worn on these days but we do encourage children to come to school every day ready to be active.

PE Days- Earrings need to be removed or covered and hair tied back.

Year 1/2 Home Learning

Reading x5 a week (Recording in Diary)

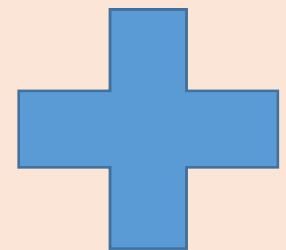
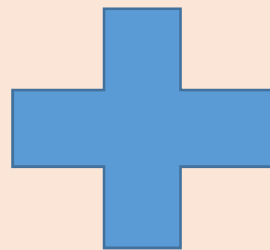
High frequency words – reading and then spelling

Maths booklet

Numbots

Bedtime Story Sack

Bedtime story sacks



ding

are now a reading school where when you walk through the door you feel there is a buzz about books and reading, links with the local library, meeting with authors and much, much more.

Why do we feel this is so important?

Importance of reading for children cannot be underestimated. Reading for pleasure benefit a child's education, social and cognitive development, their wellbeing, and mental health. Extensive research has shown that children who are readers are successful later on in life. They are likely to have more empathy and understanding.

expectations and how you can support your child.

ear we asked you to help us develop Reading for pleasure (RfP) and to help your enjoy reading and we would like you to continue this.

children are at different points on their reading journeys so reading will not look the for everyone. It could be sharing a book together, a grown up reading the taking it in turns to read or the child reading to themselves but reading a page . However it happens, it **should be happening daily** and we are asking r your child to write in their diaries at least 5 times a week. These will be checked y. We don't want reading to become a battle, but instead something that your chi es to do. We will be carrying out lots of fabulous events over the year to promote ng in our school.

ff are invested in this and we cannot stress enough how important we feel this is.

What to do if there is an issue in school or you would like to make contact with the school.

ill absence must be reported to the **school office**. If you would like to notify the pastoral care team then do so as well but not instead please.

Initial contact should be with the class teacher.

For direct contact with the phase leader – we can be reached by the phase email [@brundall.norfolk.sch.uk](mailto:phase@brundall.norfolk.sch.uk)

Phase Leader – Julie Cornish

A polite reminder – when contacting adults through the phase email could you be mindful that there are dedicated adults receiving the email. Whilst we understand the need for families to voice their views, it would be great if it could happen in a constructive way. Many thanks

Finally – please make sure hoodies and cardigans etc are named.

Named clothing finds its way back to our class.

Unnamed clothing gets taken straight to the school office.